



# Healthcare Support through Information Technology Enhancements (hSITE)





# Industry and Healthcare Partners



Centre de santé Élisabeth-Bruyère Health Centre  
Hôpital Saint-Vincent Hospital  
Résidence Saint-Louis  
Villa Marguerite





# hSITE Vision

*Using advanced communication solutions, provide the right information to the right decision-maker at the right time, in the right format.*



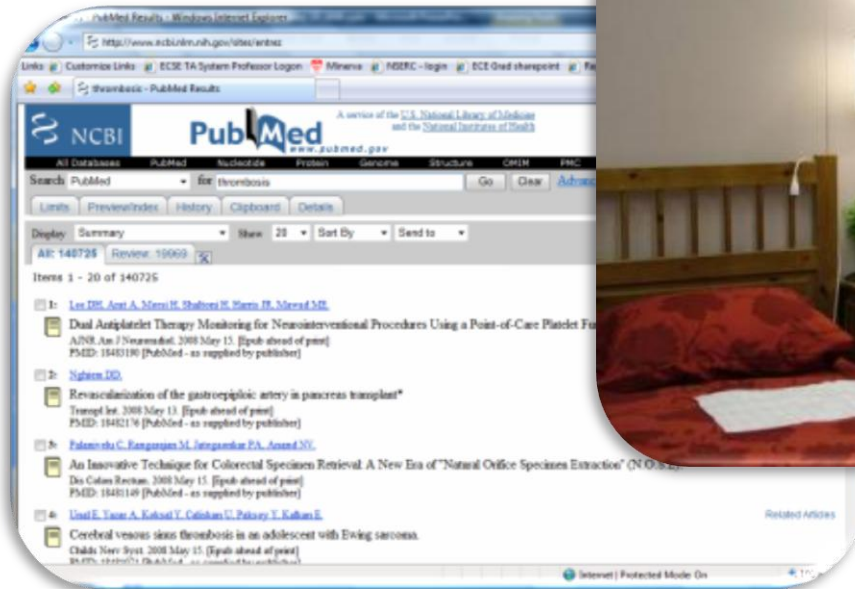
# Measures of Success

- *Impact* healthcare through:
  - Better workflows
  - Improved quality of care
  - Increased patient safety/reduced errors
  - Enhanced sustainability
- *Create* a competitive edge for our Canadian industry and healthcare partners, including training students with exceptional cross-disciplinary expertise.



# hSITE Healthcare Contexts

- Critical Care
- Homecare
- Knowledge Translation





# hSITE Context/Theme Matrix

*Theme 1: Clinical Workflows & Clinical Grade Requirements*

*Theme 2: Context Aware Sensor Systems, Software, & Applications*

*Theme 3: Enabling Networks & Technologies*



Clinical workflows, modeling, user and application interfaces

Context aware software architecture, system reliability and availability, sensor systems

Interference management in hospital environments, precise location identification

Home care workflows modeling

End-user devices, multi-sensor fusion, fidelity/rate modeling, voice controlled interfaces

Network architecture, monitoring and cognitive communications

Knowledge translation of clinical workflows

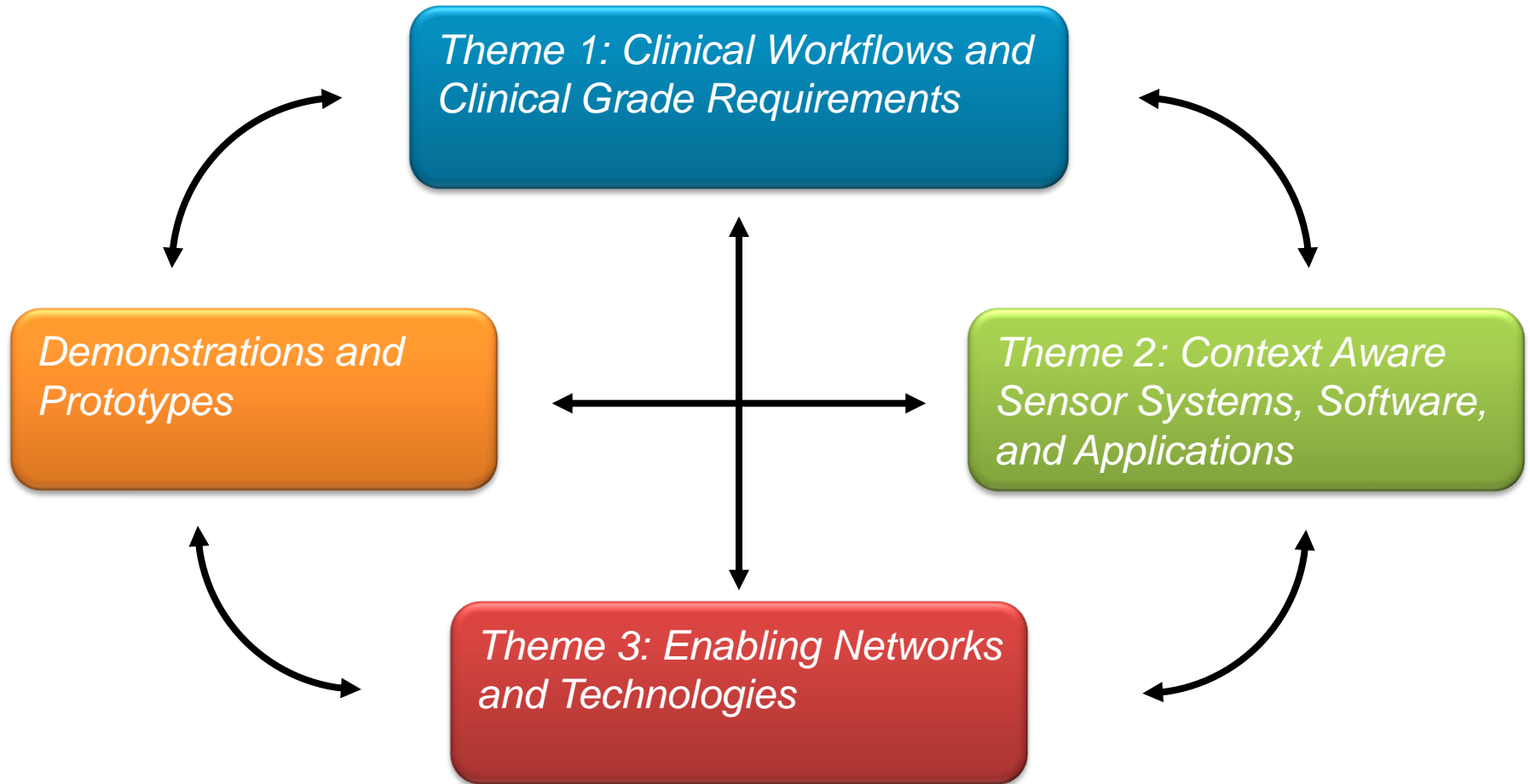
Middleware and supporting software, multi-modal information fusion, feature extraction, pattern recognition

Seamless network handover

*Demonstrations and Prototypes*



# hSITE Structure





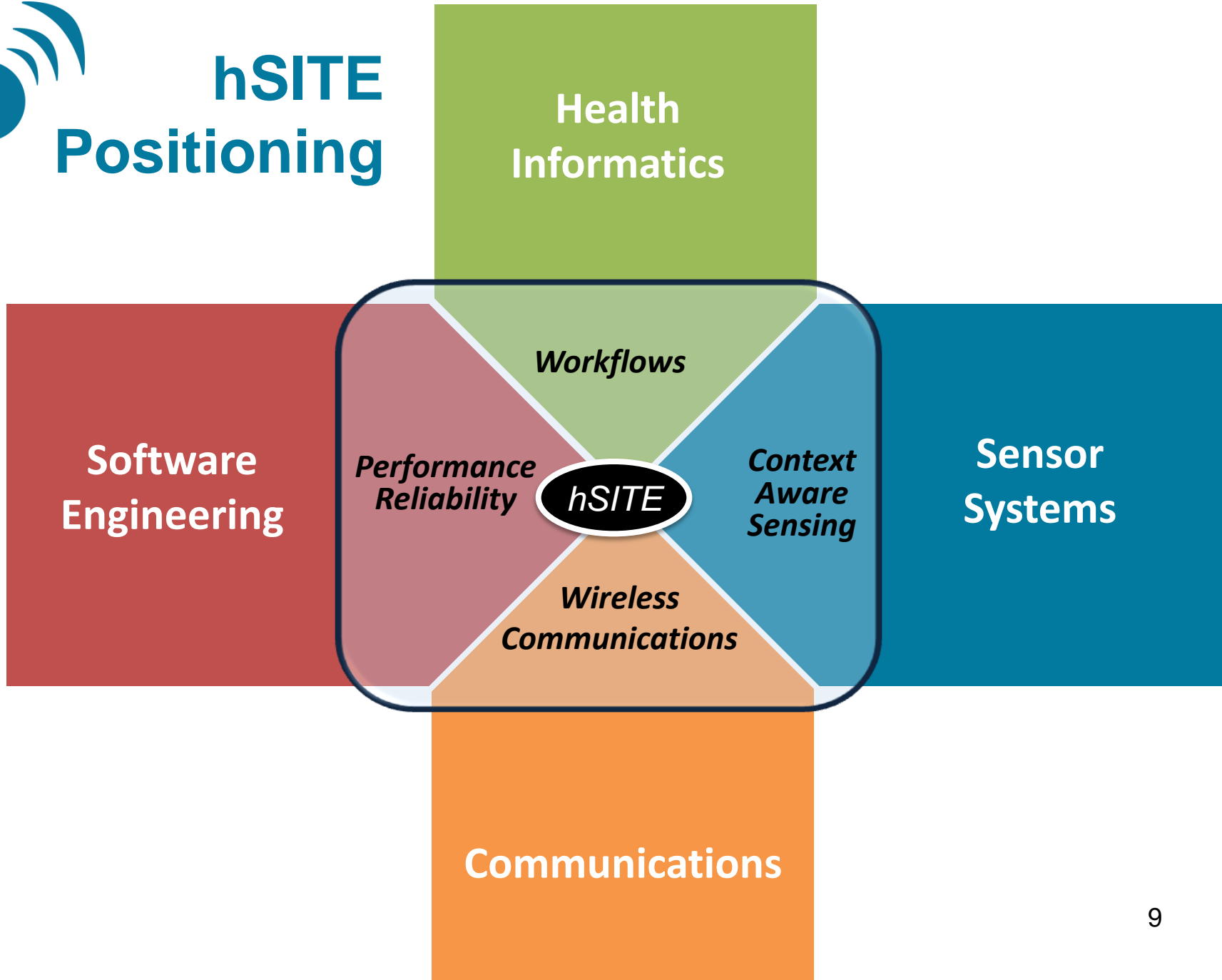
# Mission

- *Create* a new healthcare delivery paradigm based on hSITE IT solutions.
- *Integrate* IT research and healthcare needs.
- *Improve* healthcare outcomes through enhanced delivery and quality of care.
- *Transfer* knowledge and people to the Canadian industry and healthcare sectors.
- *Advance* Canada's leadership position in IT literate healthcare delivery.





# hSITE Positioning





# hSITE Value Proposition

- *Focused, integrated and cross-disciplinary* research team with a shared long-term vision.
- *Research agenda* driven by stakeholders that will deliver both long-term results that are transformative as well as pre-competitive research tailored to partner needs.
- *Targeted initiative* that accelerates research and addresses multi-disciplinary problems.
- *Collaborative research* in a field that is consistent with Canada's innovation agenda.



# Milestones and Deliverables

- *Develop* context aware clinical grade communications and decision support systems applicable to the three chosen contexts.
- *Deliver* design specifications and performance evaluations of networks, software, and technologies for targeted healthcare needs.
- *Craft* demonstrations and prototypes (simulation and experimental) of key IT solutions for healthcare.



# hSITE Team



Centre de santé Élisabeth-Bruyère Health Centre  
Hôpital Saint-Vincent Hospital  
Résidence Saint-Louis  
Villa Marguerite

